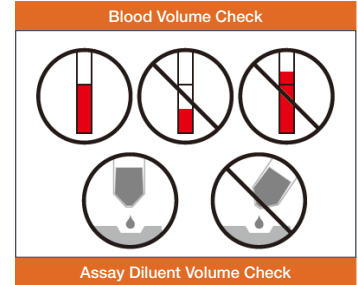


**IMPORTANT NOTE:**  
Each test can be used only **ONE TIME**. Do not attempt to use the test more than once.

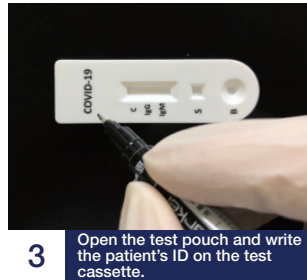
## Test Procedure



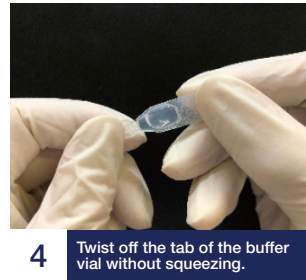
**1** Check the expiry date. If expiry date has passed, use another kit.



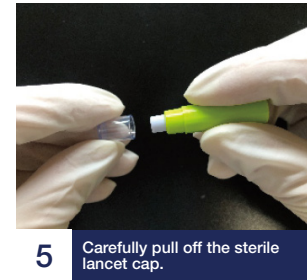
**2** Put on the gloves. Use new gloves for each patient.



**3** Open the test pouch and write the patient's ID on the test cassette.



**4** Twist off the tab of the buffer vial without squeezing.



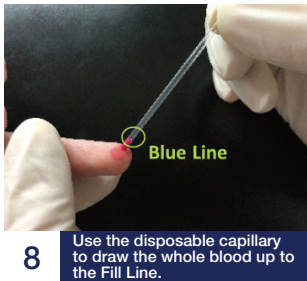
**5** Carefully pull off the sterile lancet cap.



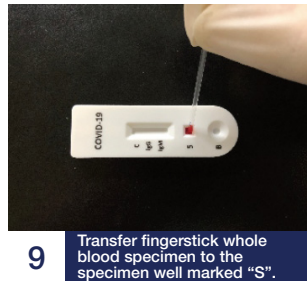
**6** To disinfect the finger tip with alcohol swab.



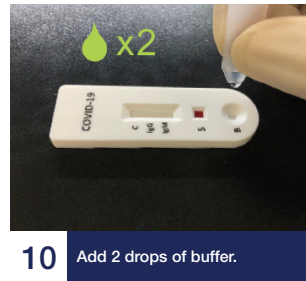
**7** Push the sterile lancet firmly onto the chosen site.



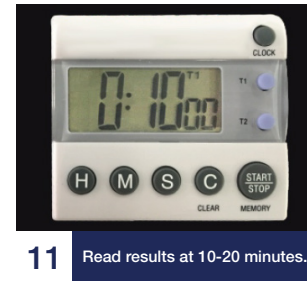
**8** Use the disposable capillary to draw the whole blood up to the Fill Line.



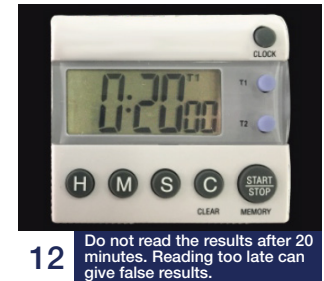
**9** Transfer fingerstick whole blood specimen to the specimen well marked "S".



**10** Add 2 drops of buffer.



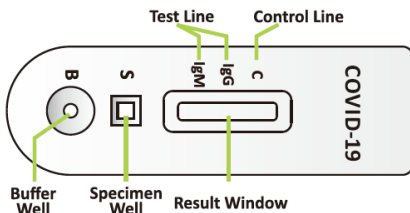
**11** Read results at 10-20 minutes.



**12** Do not read the results after 20 minutes. Reading too late can give false results.



All the used tests, specimens and potentially contaminated materials should be discarded according to the local regulations.



### CASSETTE OVERVIEW

### POSITIVE RESULTS



IgG and IgM Antibodies Positive  
Three lines appear (C, IgG and IgM)



IgG Antibodies Positive  
Two lines appear (C and IgG)



IgM Antibodies Positive  
Two lines appear (C and IgM)

### NEGATIVE RESULT



Only one colored line appears in the control region (C).

### INCONCLUSIVE RESULTS

Control line fails to appear.  
Review the procedure and repeat the test with a new test cassette.

